



WESTERN MICHIGAN UNIVERSITY
SCHOOL OF MEDICINE

Western Michigan University School of Medicine has been granted preliminary accreditation by the Liaison Committee on Medical Education, the national accrediting body for educational programs leading to the MD degree. The medical school is approved to recruit students for its first class to begin in August 2014.

Target enrollment is planned for approximately 50 students in the inaugural class, increasing to a class size of about 80.



The W. E. Upjohn Campus

- The building, widely known as Building 267, was once part of the Upjohn, Pharmacia and Pfizer downtown campuses. It was donated to Western Michigan University by Mattawan-based MPI Research in December 2011 for use by the new medical school.
- WMU will lease the building to WMU School of Medicine, a private 501(c)(3) nonprofit corporation and a collaboration involving the University and Kalamazoo's two teaching hospitals, Borgess Health and Bronson Healthcare.
- In June 2012, it was announced that the site had been named The W.E. Upjohn Campus, in honor of the founder of the Upjohn Co. and the great-grandfather of MPI's chairman and CEO William U. Parfet.
- The \$68 million building project, scheduled for completion by May 2014, includes renovation of six floors and a new addition of two team-based learning lecture halls.

Square Footage

| | |
|-------------------|-------------|
| Existing Building | 320,000 GSF |
| New Construction | 30,000 GSF |
| Total Area | 350,000 GSF |

“Its design and execution has been guided by four defining principles from the school of medicine vision: learner centered, discovery driven, globally engaged, and patient and family focused.”

*Hal B. Jenson, MD, MBA
Founding Dean, WMU School of Medicine*

Instructional Seats 564 seats

Classrooms 244 seats

- Two - 50 seats
- Four - 16 seats
- Eight - 10 seats

Lecture Halls 220 seats

- Two - 110 seats

Teaching Labs 100 seats

(gross anatomy, bioskills)

Auditorium up to 400 seats

Study Space 200 seats

Social Space 150 seats

Simulation Center

Simulation Rooms 8 rooms

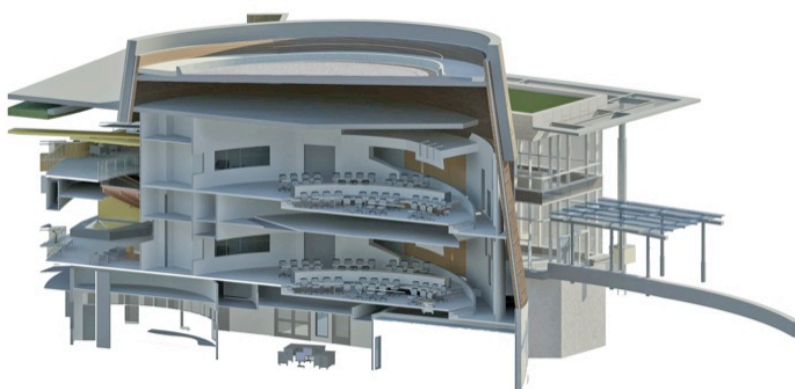
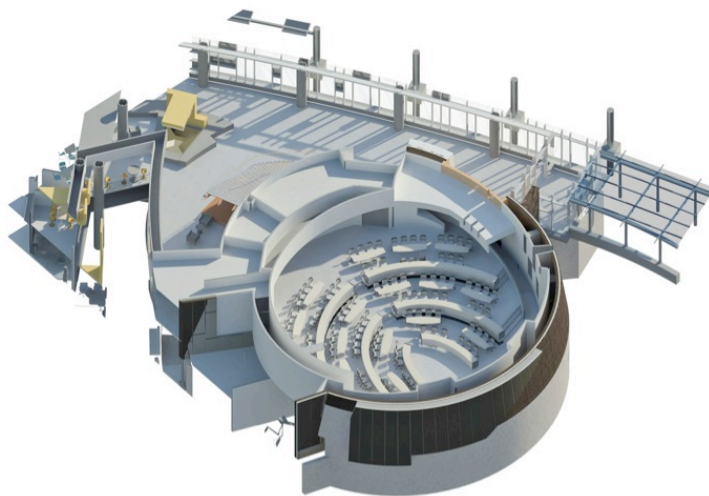
- Six rooms - 300 square feet
- Two - 600 square feet

Skills/Task Trainer Rooms 5 rooms

Standardized Patient Exam Rooms 12 rooms

Debrief/classrooms 148 seats

- Two - 30 seats
- Two - 24 seats
- Four - 10 seats



Architectural/Engineering

*The **S / L / A / M** Collaborative*

DIEKEMAHAMANN

Construction Management

