



WESTERN MICHIGAN UNIVERSITY

SCHOOL OF MEDICINE

# Building the Future of Medical Education in Kalamazoo



OPENING IN MAY 2014

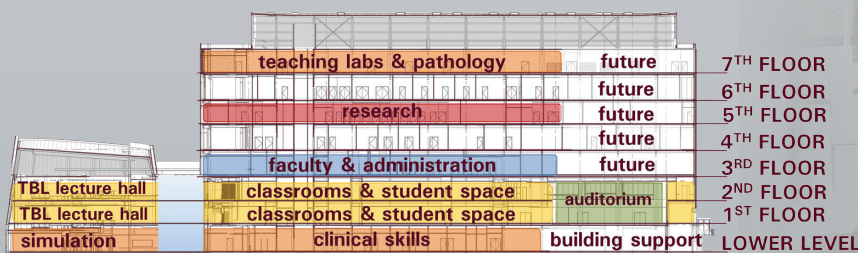
artist's rendering of proposed exterior

As the first building for the new WMU School of Medicine, this inaugural facility will be home to a pioneering class of students, faculty and staff and remain relevant to the future generations that will follow in their footsteps. Its design and execution has been guided by four defining principles from the school of medicine vision:

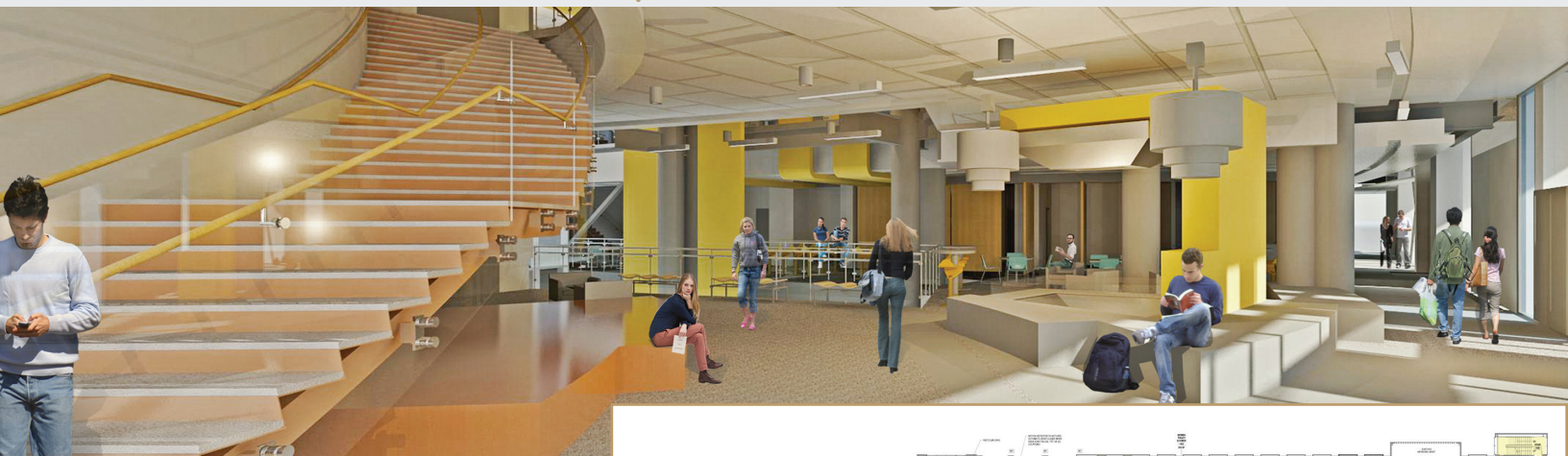
**Learner Centered | Discovery Driven | Globally Engaged | Patient & Family Focused**

In December 2011, William U. Parfet, chairman and CEO of MPI Research in Mattawan, Michigan, donated a 330,000 square-foot building to Western Michigan University to be used by the new medical school. The seven-story building on 300 Portage Street in Kalamazoo is located at the heart of the new W.E. Upjohn Campus. A \$68 million renovation and expansion project is scheduled to be completed by May 2014 in time for the first class of medical students to begin in August 2014.

W.E. UPJOHN CAMPUS SITE PLAN



**BUILDING PROFILE** - The new medical school will include educational, research, and administrative space on six floors of the building.



**VIEW FROM MAIN ENTRY**

**MAIN ENTRY**



**1ST FLOOR - Two Team-Based Learning Lecture Halls, Classrooms, Café, Fitness Center, Auditorium**



**LOWER LEVEL - Simulation Center, Building Support**



**TEAM-BASED LEARNING LECTURE HALL**



**2ND FLOOR - Classrooms, Information Commons (Library), Admissions, Student & Resident Affairs, Registrar, Financial Aid, Student Learning Communities**

**WESTERN MICHIGAN UNIVERSITY SCHOOL OF MEDICINE**

The new Western Michigan University School of Medicine is a collaboration involving Western Michigan University and Kalamazoo's two teaching hospitals, Borgess Health and Bronson Healthcare. It has been in planning since 2008, and was granted Preliminary Accreditation from the Liaison Committee on Medical Education in October 2012. Expected to welcome its first class in fall 2014, the school is a private 501(c)(3) nonprofit corporation supported by private gifts, clinical revenue, research activity, tuition from students, and endowment income. In March 2011, Western Michigan University received a gift of \$100 million for the medical school from anonymous donors.