



WMU SCHOOL OF MEDICINE ANNOUNCES ACCREDITATION AT GROUNDBREAKING EVENT



At the ceremonial groundbreaking for the new Western Michigan University School of Medicine building located on Portage Street in downtown, Kalamazoo, Dr. Hal B. Jensen, MD, MBA, founding dean, announced that the medical school has been granted preliminary accreditation from the Liaison Committee on Medical Education, the national accrediting body for educational programs leading to the MD degree.

“This is an important step because we now have the go ahead to recruit students for our first class to begin in August 2014,” said Jensen.

He thanked the visionary leaders from Western Michigan University and Kalamazoo’s two teaching hospitals, Borgess Health and Bronson Healthcare who have collaborated to develop the medical school.

“The Kalamazoo community has a 40-year legacy of collaboration providing outstanding undergraduate and graduate medical education. The Liaison Committee on Medical Education noted this as a major strength of the new medical school,” according to Jensen.

One simple but powerful word was repeated during Friday’s groundbreaking ceremony for the new Western Michigan University School of Medicine: community.

A crowd of over 350, representing area physicians, community leaders, local residents, premedical students from the WMU Chapter of the American Medical Student Association, and employees from the medical school gathered under a tent at the site for Western Michigan University School of Medicine’s 350,000-square-foot educational facility Friday to see the ceremonial shovels break ground on this community initiative. Several speakers, including U.S. Congressman Fred Upton and WMU President John M. Dunn, spoke of what the school – scheduled to open in the fall of 2014 – will mean not only to the area’s economy, but to healthcare in Michigan and the southwest Michigan community.



“The city of Kalamazoo has a history of excellence in education, healthcare, research and life science exploration – all of which are assets for the development of a new medical school,” said President Dunn.

“Efforts to launch a medical school address the growing shortage of physicians in Michigan and the nation, and provide other benefits to the area,” according to Dr. Dunn.

“A new medical school will contribute to meeting the national and local need for physicians and also bring benefits to the state of Michigan and Kalamazoo community. New jobs generate personal income for local residents. Businesses in the wholesale, retail, service and manufacturing sectors benefit from the direct expenditures of the medical school on goods and services. In addition, businesses are recipients of spending by staff, medical students and their visitors. And, the \$68 million investment to renovate and expand this building in downtown Kalamazoo will mean the School of Medicine will have an immediate impact on the community as well.”



In December 2011, William U. Parfet, chairman and CEO of MPI Research in Mattawan, Mich. donated the existing 320,000 square foot building to Western Michigan University to be used by the new medical school. Dr. Hal Jenson talked about the history and future of medical education in southwest Michigan.

“This seven-story building is located in the W.E. Upjohn Campus of the School of Medicine. The campus is named after William Erastus Upjohn, William Parfet’s great grandfather, who moved from Hastings, Michigan to Kalamazoo to start The Upjohn Company in 1885. This property was the first piece of land he purchased. We are fortunate and privileged to have this site as the home of the new medical school.”



“This facility will be home to a pioneering class of students, faculty and staff and remain relevant to the future generations that will follow in their footsteps,” Jenson continued. “Its design and execution have been guided by four defining principles from the school of medicine vision: learner centered, discovery driven, globally engaged, and patient and family focused.”

The new medical school will admit an inaugural class of approximately 50 students, eventually increasing this number to about 80 students each year. These students will receive instruction from School of Medicine physician faculty and residents, as well as community physicians. Medical students will be exposed to a wide range of patient care environments at the Western Michigan University School of Medicine Clinics, area physician offices, and at Borgess Medical Center and Bronson Methodist Hospital.

“This will be a day long remembered,” Dr. Jenson told the crowd. “Each of you can look back and say that you were at Western Michigan University School of Medicine the day they broke ground on the new medical school and celebrated the accreditation of the medical school.”

Pictured above: WMU President John Dunn; William U. Parfet and Martha G. Parfet, great-grandson and granddaughter of W.E. Upjohn

To see more photos from the WMed groundbreaking and celebration luncheon, please visit the WMed website at <http://med.wmich.edu/gallery/groundbreaking>.

Building Profile

The \$68 million building project, scheduled for completion by May 2014, includes renovation of six floors for education, research and administrative functions and a new addition of two team-based learning lecture halls.

Square Footage

Existing Building 320,000 GSF
New Construction 30,000 GSF
Total Area 350,000 GSF

Instructional Seats 564 seats

Classrooms 244 seats

Two - 50 seats

Four - 16 seats

Eight - 10 seats

Lecture Halls 220 seats

Two - 110 seats

Teaching Labs 100 seats

(gross anatomy, bioskills)

Auditorium up to 400 seats

Study Space 200 seats

Social Space 150 seats

Simulation Center

Simulation Rooms 8 rooms

Six rooms - 300 square feet

Two - 600 square feet

Skills/Task Trainer Rooms 5 rooms

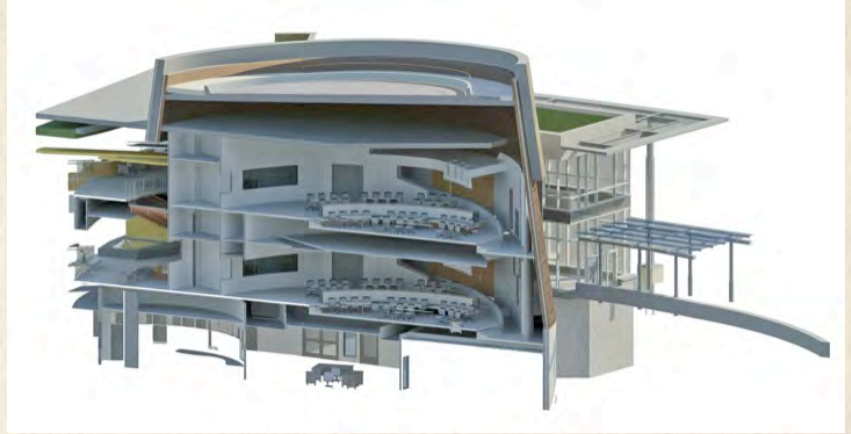
**Standardized Patient
Exam Rooms** 12 rooms

Debrief/classrooms 148 seats

Two - 30 seats

Two - 24 seats

Four - 10 seats



From left: WMed Board of Directors - Paul Spaude, Hal Jenson, Frank Sardone, John Dunn, Larry Tolbert

ACCREDITATION COMMITTEES CELEBRATE ACCOMPLISHMENTS

Members of the Accreditation Planning Committees celebrated their accomplishments at a luncheon following the WMU School of Medicine groundbreaking where Dean Hal Jenson announced the medical school preliminary accreditation by the LCME.

“What a day! I’ve been dreaming of this day for over five years, and here it is. When I first came to Kalamazoo in 2007 it didn’t take long for me to see that Kalamazoo has the necessary building blocks for developing an outstanding medical school. Fast forward five years to 2012, Kalamazoo now has an accredited medical school. Perhaps the biggest building block was the spirit of



collaboration and community engagement here,” WMU President and Chair of the School of Medicine Board of Directors John Dunn said during his remarks at the luncheon.

Borgess Health President Paul Spaude, told the audience, “We could not open our medical without the LCME’s good housekeeping seal of approval.” The medical school’s accreditation journey started in 2010 and has included submission of 1,100 pages of documentation and hosting a site visit this past summer, he explained.

“We are here today because of you – the members of our accreditation planning committees,

subcommittees and workgroups. While not everyone could join us today, there are more than 270 individuals who have given their time and expertise to plan and develop our medical school. Because of you, what began as a great idea five years ago is now a reality. We have an accredited medical school in Kalamazoo, Michigan. Thank you for your role in bringing our new medical school to life,” said Frank Sardone, President of Bronson Healthcare.

EMPLOYMENT OPPORTUNITIES

WMU School of Medicine is recruiting for a Chair of the Department of Medical Education. A variety of staff positions are open including a RN, manager of student and resident affairs, executive assistant for the Dean’s office, and EMS clinical coordinator. More detailed information about these positions is available at www.med.wmich.edu in the Employment section.

ABOUT WMU SCHOOL OF MEDICINE

The new Western Michigan University School of Medicine is a collaboration involving Western Michigan University and Kalamazoo’s two teaching hospitals, Borgess Medical Center and Bronson Methodist Hospital. It has been in planning since 2008 and was granted preliminary accreditation from the Liaison Committee on Medical Education in October 2012. Expected to welcome its first class in fall 2014, the school is a private 501(c)(3) nonprofit corporation supported by private gifts, clinical revenue, research activity, tuition from students, and endowment income. In March 2011, Western Michigan University received a gift of \$100 million for the medical school from anonymous donors.